



Artwork - set at 1/4 size*

2x1 width = 673mm
(each panel 168.25mm)
height = 194mm

1x1 width = 504.75mm
(each panel 168.25mm)
height = 194mm

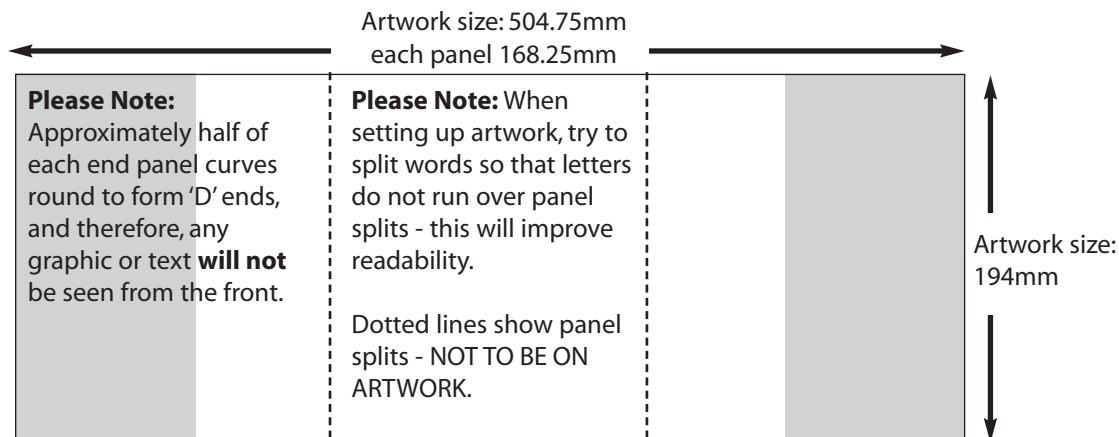
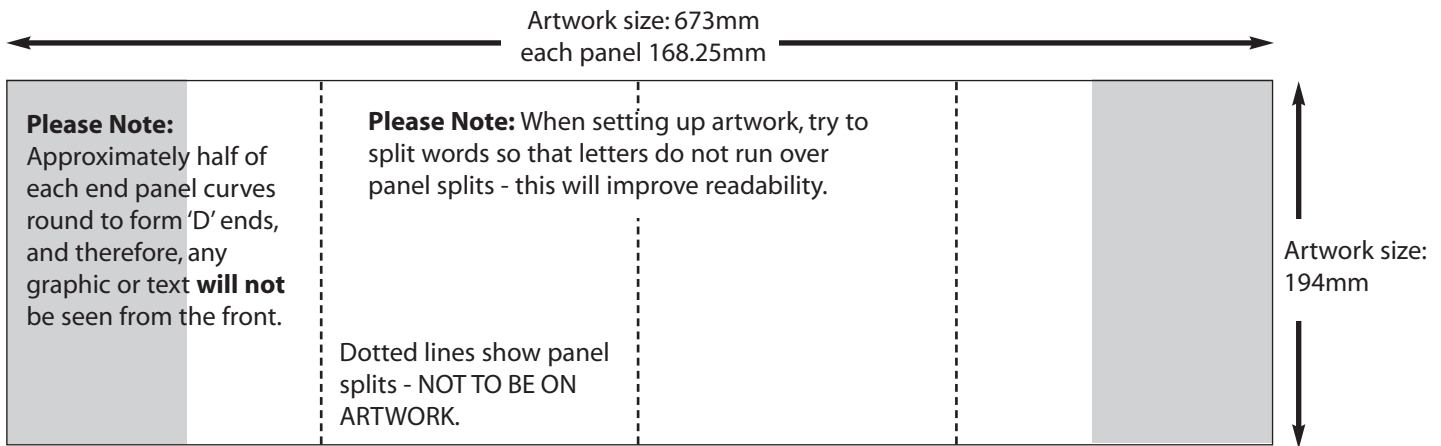
PLEASE SET ARTWORK AT QUARTER SIZE.

IMAGES 300dpi.

NO BLEED, NO CROP MARKS.

File Format

Preferred formats hi-res pdf, jpeg, tiff or eps. However we carry versions of all major design/page layout software (mac or pc), please call for help or advice on versions.



- **Make sure all images are RGB or CMYK do not mix the two.**
- **DO NOT BLEED AND DO NOT USE CROP MARKS.**
- **Please set artwork as 1(one) whole panel DO NOT split into single panels.**
- **Please flatten and embed or convert to paths ALL FONTS when supplying files, unless supplying fonts by previous arrangement.**

*Artwork sizes are 1/4 (quarter) size of actual dimensions to enable smaller file sizes and easier sending.

Actual graphic sizes:

2x1 2692mm wide (673mm each panel) x 776mm panel
1x1 2019mm wide (673mm each panel) x 776mm panel

Upload artwork using www.mailbigfile.com/plus

01782 264110 . info@theplusgroup.co.uk . www.rollerbannerstands.com

plus-display, 151 Etruria Road, Hanley, Stoke-on-Trent, ST1 5NS